

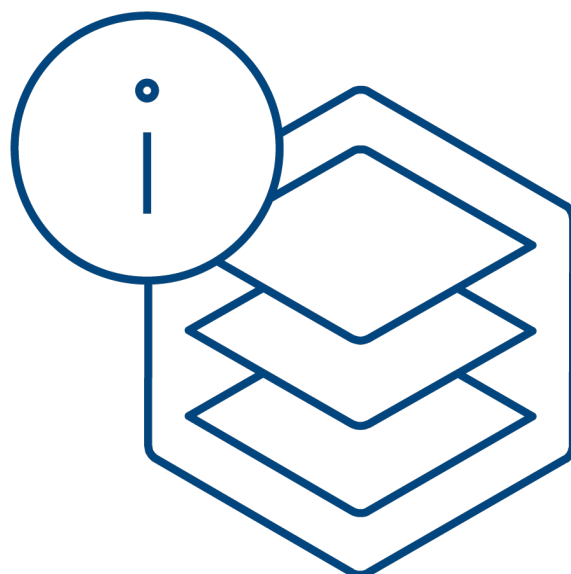
# Symphony Suite

---

## Installation Guide

Version 1.0.1

English



# 1 Introduction

## What is Symphony Suite?

The Symphony Suite serves as Selectron Systems AG's documentation platform for customers. After successful installation, the user has access to all system manuals, product descriptions, tools, firmware, drawings, certificates and much more from a single source.

All these documents together form the Symphony Suite Catalog. An intuitive search function makes relevant information easily accessible to the user.

## Steps to Do

In order to access the catalog, please follow the following steps.

1	Register on the Selectron Homepage	<a href="#">Page 3</a>
2	Download the Installation Software for Symphony Suite	<a href="#">Page 4</a>
3	Install the Symphony Suite application	<a href="#">Page 5</a>
4	Login to Symphony Suite	<a href="#">Page 9</a>
5	Check, if access is to be made via a proxy server	<a href="#">Page 10</a>
6	Check and apply recommended settings	<a href="#">Page 11</a>
7	Download / Update the Catalog	<a href="#">Page 12</a>

If you have any questions, please contact [support@selectron.ch](mailto:support@selectron.ch).

## 2 Register on the Selectron Homepage

Go to <https://cockpit.selectron.ch/Account/Register> and register using your company email address.

**SELECTION**

YOUR PERSONAL  
COCKPIT

### Download / Register

Please fill out the form below. All fields are required.

ALWAYS UP TO DATE

- Get the new software versions from our download center.

E-Mail \*

Company \*

Title \*

Surname \*

First Name \*

Function \*

Country \*

Phone \*

Homepage \*

Accept Terms and Conditions \*  [Show Terms and Conditions](#)

Accept privacy protection policy  [Show privacy protection policy](#)

Password \*

Confirm Password \*

Need help? Contact us on [Support@Selectron.ch](mailto:Support@Selectron.ch).

Selectron Systems AG - Bernstrasse 70 - 3250 Lyss/Schweiz  
T +41 32 387 61 61 - [info@selectron.com](mailto:info@selectron.com)

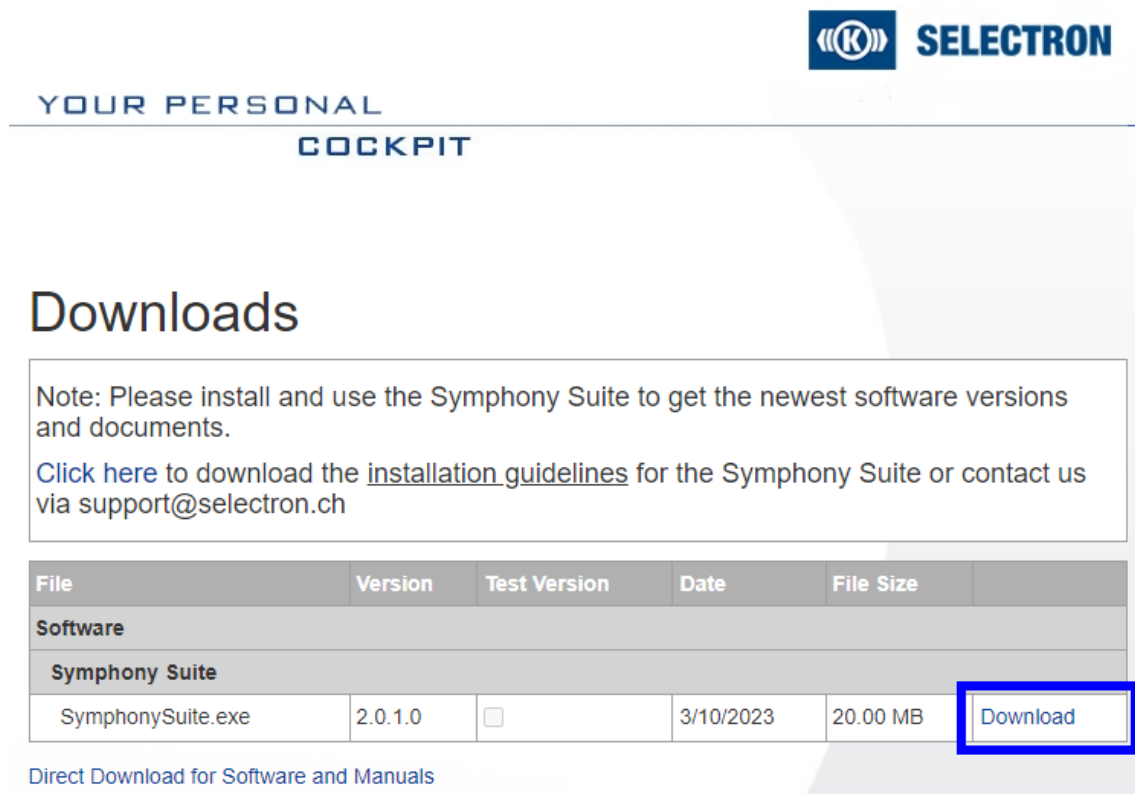
Fig. 1: Registration

### **i** NOTE

If you use a private email address, the registration will be denied. The registration process can take up to 48 h, as it is done manually. In order to speed up the process, please contact [sales@selectron.ch](mailto:sales@selectron.ch).

## 3 Download the Installation Software for Symphony Suite

Once the registration is confirmed, you will be notified by email. Afterwards, you can download the Symphony Suite under <https://cockpit.selectron.ch/en/download>.



**SELECTRON**

YOUR PERSONAL  
COCKPIT

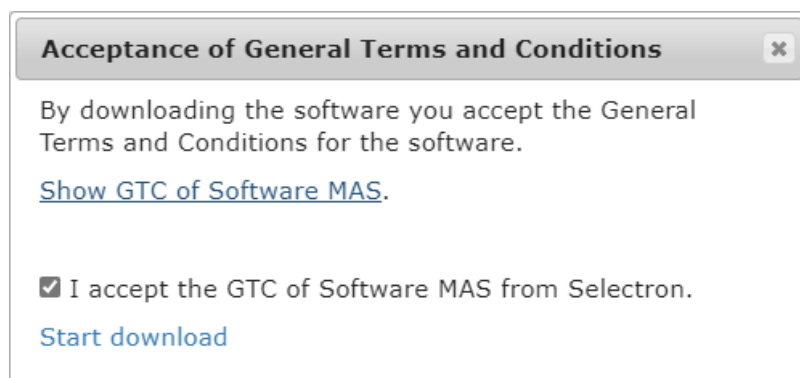
### Downloads

Note: Please install and use the Symphony Suite to get the newest software versions and documents.  
[Click here](#) to download the [installation guidelines](#) for the Symphony Suite or contact us via [support@selectron.ch](mailto:support@selectron.ch)

File	Version	Test Version	Date	File Size	
<b>Software</b>					
<b>Symphony Suite</b>					
SymphonySuite.exe	2.0.1.0	<input type="checkbox"/>	3/10/2023	20.00 MB	<a href="#">Download</a>

[Direct Download for Software and Manuals](#)

Fig. 2: Download Software



**Acceptance of General Terms and Conditions** [X]

By downloading the software you accept the General Terms and Conditions for the software.

[Show GTC of Software MAS.](#)

I accept the GTC of Software MAS from Selectron.

[Start download](#)

Fig. 3: Accept the Terms and Conditions

### **i** NOTE

You need local admin rights in order to install the Symphony Suite.

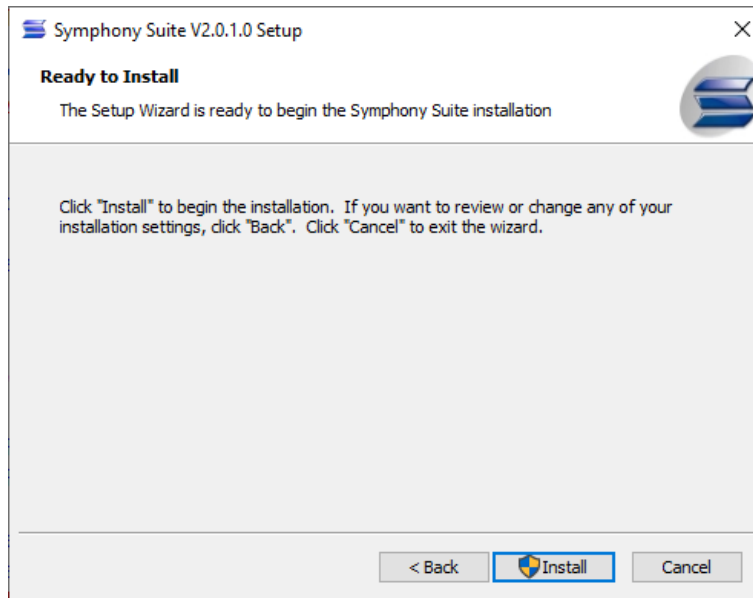
## 4 Install the Symphony Suite

Double click the downloaded file; a Setup Wizard will be started. Follow these installation steps:

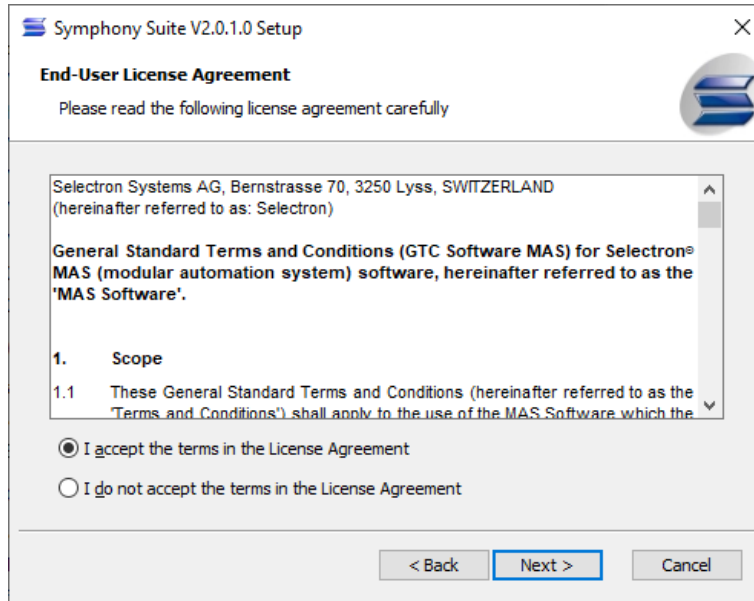
1. Start Setup Wizard and click Next



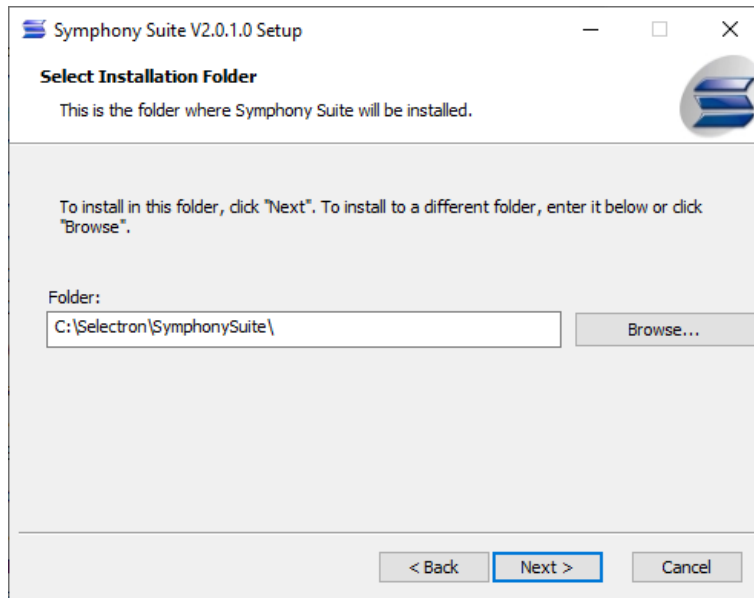
2. Click Install



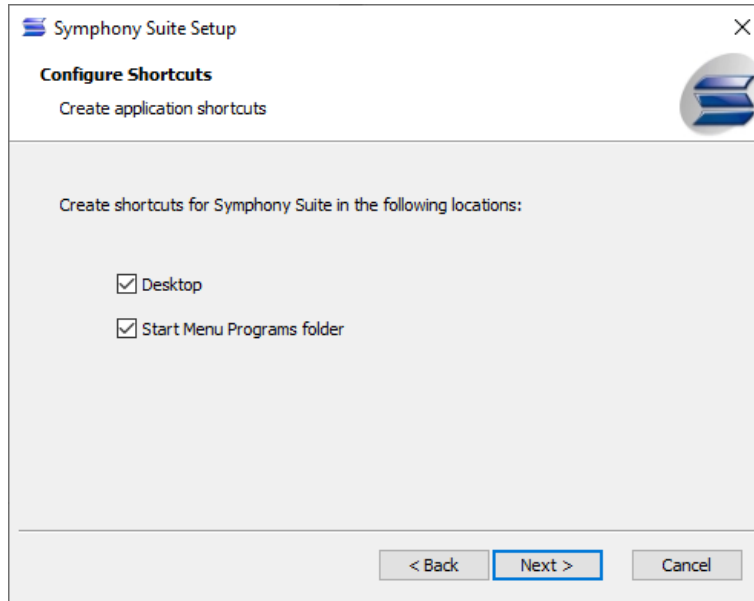
### 3. Accept the License Agreement



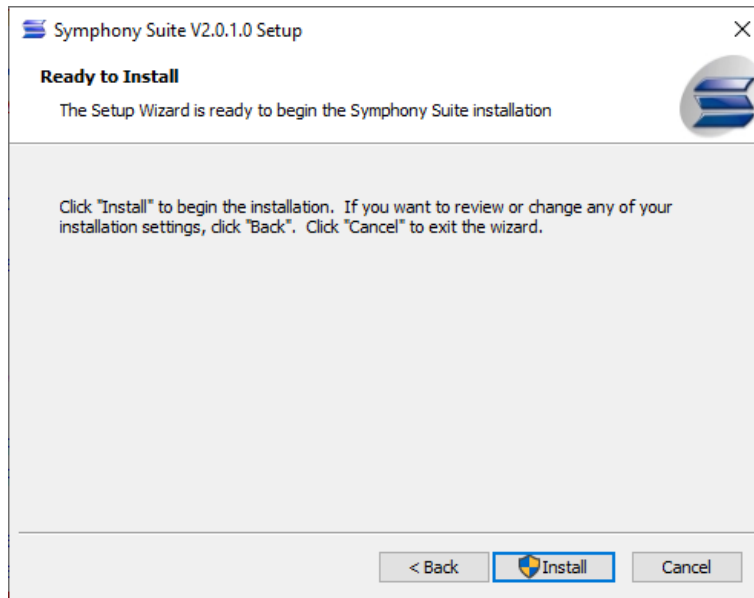
### 4. Choose installation folder



5. Choose the shortcuts

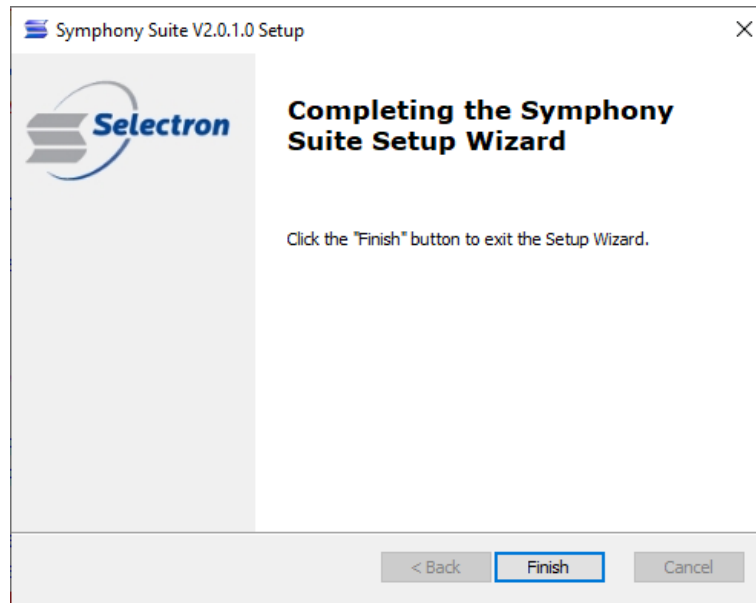


6. Click Install



7. Accept the Changes to Program

8. Finish the Installation





## 5 Login to Symphony Suite

First start the Symphony Suite by double clicking the icon on your desktop or by opening "All Programs" ► "Selectron" ► "Symphony Suite".



Fig. 4: Symphony Suite Icon

The login window will open automatically; it can be opened in the upper right corner of the Symphony Suite.

### **i** NOTE

In case of using a proxy server, close the Login window by pressing "Cancel" and follow the instructions in the next chapter.

To check the proxy server settings on your computer, follow this link:

<https://helpdeskgeek.com/networking/internet-connection-problem-proxy-settings/>

Now enter your chosen email address and password (in step 1 at registration).

In case you forgot your password, follow the link "Forgot password".


In case you want to make a new registration, please follow the link "New registration".

The standard language is German. You can change the language in tab "Extras" ► "Sprache" ("Extras" ► "Language").

Log on

**Log on**

Please enter the email address and password you have used on <http://cockpit.selectron.ch>.

 Email address

Password

[Forgot Password](#)

[Register](#)

OK Cancel

Fig. 5: Login

## 6 How to use a Proxy Server

In case you use a proxy server, cancel the Login and please go to "Extras ► Settings".

Check the "Use Proxy" Checkbox in order to fill in the Proxy-Address.

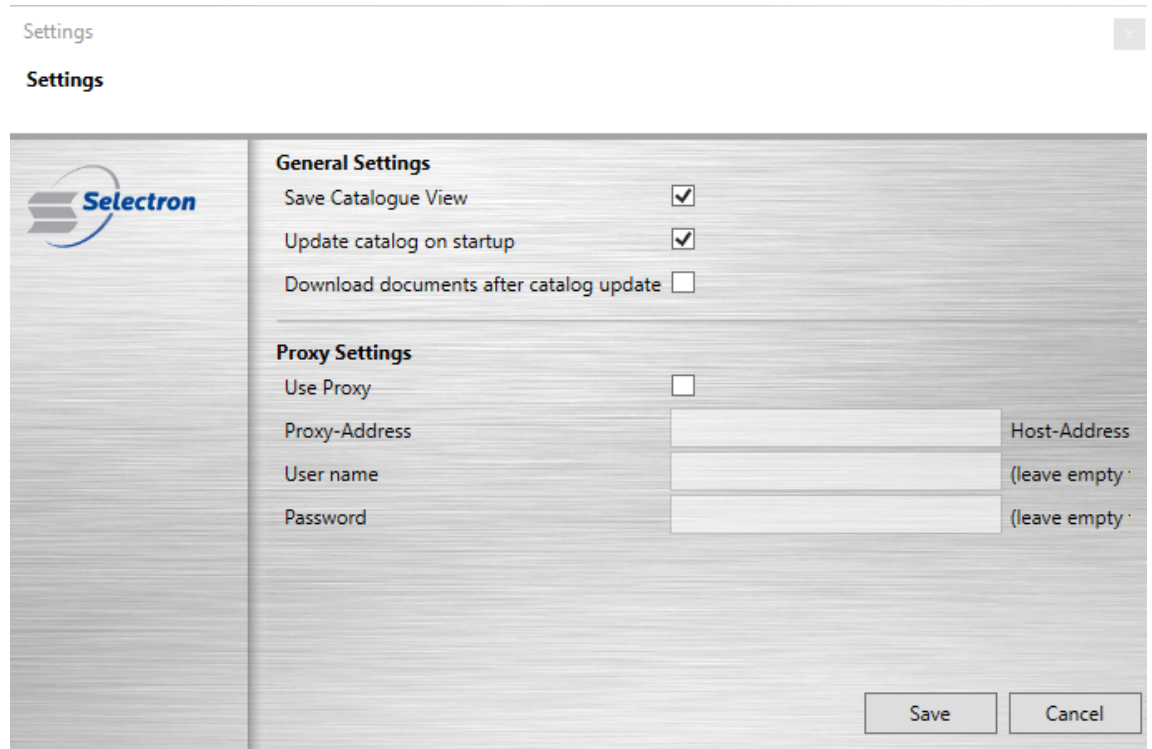


Fig. 6: General Settings

Once the proxy server settings are complete, click save and go back to the previous chapter (Login).

## 7 Recommended Settings

Please go to "Extras ► Settings" and choose all 3 options mentioned under General Settings.

### **i** NOTE

We recommend you to choose all 3 options mentioned under General Settings:

- Save Catalog View keeps the last view you had when closing the Symphony Suite.
- Update on Startup automatically updates the catalog in the background. A pop-up appears every time the Symphony Suite is opened. By accepting the pop-up, the data is loaded into the Catalog.
- Download Documents after catalog update accepts the Checkbox in the pop-up, the documents are downloaded automatically when accepting the pop-up. The windows freezes for a short time, no action is possible.

## 8 Download / Update the Catalog

Go to the tab "Catalog" and choose "1. Update Catalog". A pop-up will appear in the lower right corner.

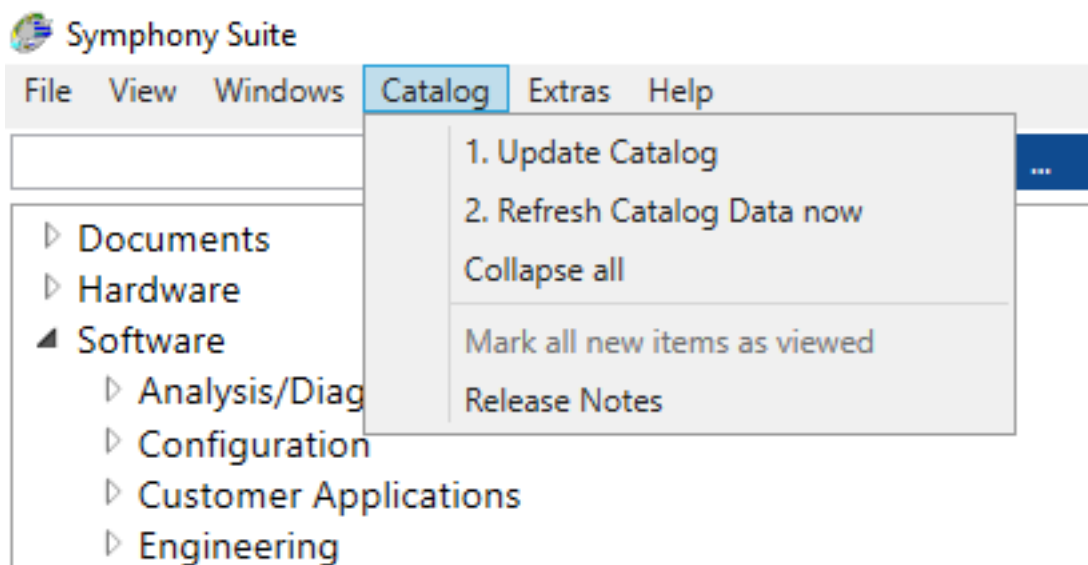


Fig. 7: Update Catalog

Once the update is finished, a second pop-up appears. Accept the Checkbox in order to download files, then click the button "Refresh catalog now". This pop-up will disappear after a few minutes, but can be chosen under "Catalog" ► "2. Refresh Catalog Data Now".

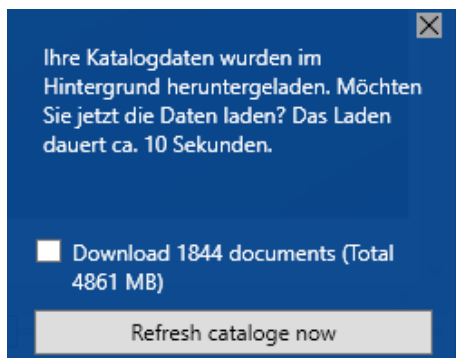


Fig. 8: Refresh Catalog Data

### **i** NOTE

When applying "Refresh Catalog now", the Symphony Suite will freeze for a short time, as the catalog data is loaded into the overview. During this freeze, no action is possible.

We hope you enjoy the Symphony Suite – if you have questions or remarks, please contact [support@selectron.ch](mailto:support@selectron.ch).

**Selectron Systems AG**

Bernstrasse 70

3250 Lyss

Switzerland

Tel: +41 32 387 61 61

Fax: +41 32 387 61 00

[www.selectron.ch](http://www.selectron.ch)